

# MDB BASICS 2018

Neal Flum  
Aaron Levy

**A** ♩=126

Musical notation for section A, measures 1-4 and 5-8. The music is in 4/4 time with a tempo of 126. It features a rhythmic pattern of eighth and sixteenth notes with frequent rests.

**B**

Musical notation for section B, measures 9-13 and 14-17. The music continues the rhythmic pattern from section A.

**C**

Musical notation for section C, measures 18-22 and 23-26. The music concludes with a final measure.

# MDB BASICS 2018

Neal Flum  
Aaron Levy

A ♩=126

Section A consists of two staves of music. The first staff contains measures 1 through 4, and the second staff contains measures 5 through 8. The music is written in 4/4 time with a tempo of 126 beats per minute. It features a complex rhythmic pattern of eighth and sixteenth notes, primarily using chords and dyads. The key signature has one flat (B-flat).

B

Section B consists of two staves of music. The first staff contains measures 9 through 13, and the second staff contains measures 14 through 17. The music continues the rhythmic and harmonic patterns established in section A, maintaining the 4/4 time signature and one-flat key signature.

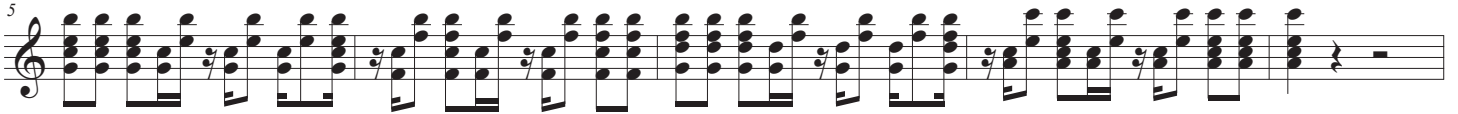
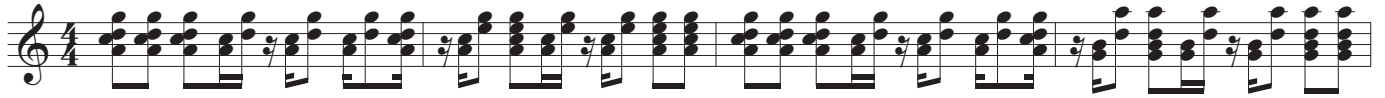
C

Section C consists of two staves of music. The first staff contains measures 18 through 22, and the second staff contains measures 23 through 26. This section introduces accents (>) over the notes, which are primarily chords and dyads. The rhythmic pattern remains consistent with the previous sections, in 4/4 time with one flat.

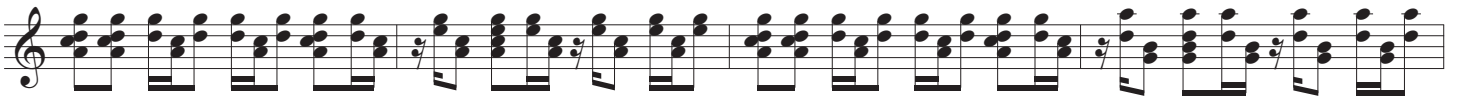
# MDB BASICS 2018

Neal Flum  
Aaron Levy

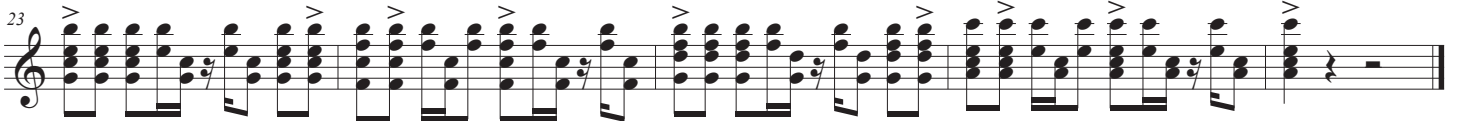
A ♩=126



B



C



Synth Pad

# MDB BASICS 2018

Neal Flum  
Aaron Levy

**A** ♩=126

Synth Pad

Musical notation for Synth Pad section A, measures 1-4. The piece is in 4/4 time with a tempo of 126. The notation consists of two staves: a treble clef staff and a bass clef staff. Each staff contains four measures of music, primarily consisting of chords. The first measure has a treble chord of G4, B4, D5 and a bass chord of G2, B1, D2. The second measure has a treble chord of G4, B4, D5 and a bass chord of G2, B2, D2. The third measure has a treble chord of G4, B4, D5 and a bass chord of G2, B2, D2. The fourth measure has a treble chord of G4, B4, D5 and a bass chord of G2, B2, D2.

5

Pad

Musical notation for Pad section A, measures 5-9. The notation consists of two staves: a treble clef staff and a bass clef staff. Each staff contains five measures of music. The first four measures are chords: treble (G4, B4, D5) and bass (G2, B2, D2). The fifth measure has a treble chord of G4, B4, D5 and a bass chord of G2, B2, D2, with a fermata over the final notes.

**B**

Pad

Musical notation for Pad section B, measures 10-13. The notation consists of two staves: a treble clef staff and a bass clef staff. Each staff contains four measures of music, primarily consisting of chords. The first measure has a treble chord of G4, B4, D5 and a bass chord of G2, B2, D2. The second measure has a treble chord of G4, B4, D5 and a bass chord of G2, B2, D2. The third measure has a treble chord of G4, B4, D5 and a bass chord of G2, B2, D2. The fourth measure has a treble chord of G4, B4, D5 and a bass chord of G2, B2, D2.

14

Pad

Musical notation for Pad section B, measures 14-18. The notation consists of two staves: a treble clef staff and a bass clef staff. Each staff contains five measures of music. The first four measures are chords: treble (G4, B4, D5) and bass (G2, B2, D2). The fifth measure has a treble chord of G4, B4, D5 and a bass chord of G2, B2, D2, with a fermata over the final notes.

**C**

Pad

Musical notation for Pad section C, measures 19-22. The notation consists of two staves: a treble clef staff and a bass clef staff. Each staff contains four measures of music, primarily consisting of chords. The first measure has a treble chord of G4, B4, D5 and a bass chord of G2, B2, D2. The second measure has a treble chord of G4, B4, D5 and a bass chord of G2, B2, D2. The third measure has a treble chord of G4, B4, D5 and a bass chord of G2, B2, D2. The fourth measure has a treble chord of G4, B4, D5 and a bass chord of G2, B2, D2.

23

Pad

Musical notation for Pad section C, measures 23-27. The notation consists of two staves: a treble clef staff and a bass clef staff. Each staff contains five measures of music. The first four measures are chords: treble (G4, B4, D5) and bass (G2, B2, D2). The fifth measure has a treble chord of G4, B4, D5 and a bass chord of G2, B2, D2, with a fermata over the final notes.

# MDB BASICS 2018

Neal Flum  
Aaron Levy

**A** ♩=126

Section A consists of two staves of music in 4/4 time. The first staff contains measures 1 through 4, and the second staff contains measures 5 through 8. The music is written in bass clef and features a mix of eighth and sixteenth notes with various rests and slurs.

**B**

Section B consists of two staves of music in 4/4 time. The first staff contains measures 9 through 13, and the second staff contains measures 14 through 17. The music continues with eighth and sixteenth note patterns.

**C**

Section C consists of two staves of music in 4/4 time. The first staff contains measures 18 through 22, and the second staff contains measures 23 through 26. The music concludes with a final double bar line.

# MDB BASICS 2018

Neal Flum  
Aaron Levy

**A**  $\text{♩} = 126$

1 2 3 4

5

5 6

**B**

7 8 9 10

14

11 12 13 14

**C**

15 16 17 18

23

19 20 21 22